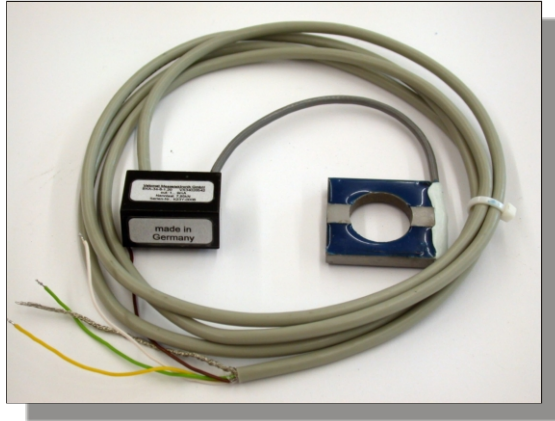


Force Transducer BKA-34-8-5.20

article-no: VX34020696
serial-no: key 26Z



description

The force transducer BKA-34 is intended for axial compressive forces.

The use spectrum is for static and dynamic strengths at elevators, shafts, axes, screwing connections, springs and for weighing tasks.

The special qualities are justified in the uncomplicated form, the low building height and the relatively high insensitivity opposite eccentric strength introduction.

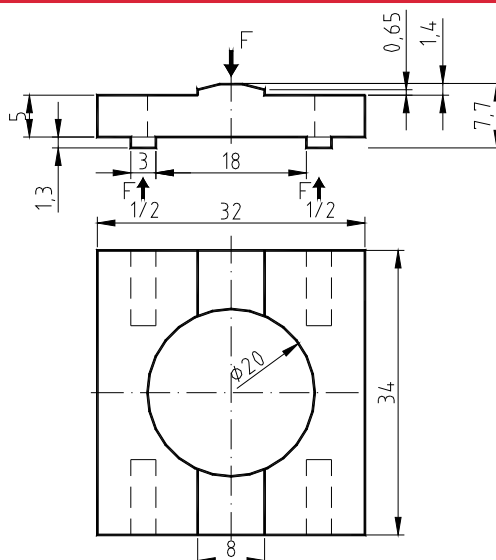
The application room is protected by a synthetic material covering depth against chemical and mechanical stress with a high elastic mass.

The strain gauges full bridge measured the bending of the measuring cell.

A downstream amplifier in the external case generated the output signal from 1 to 9 mA.

The shield of the cable is not connected basically with the surface of the force transducer.

specification



mechanical execution

diameter, force transmission and mounting see assembly drawing

weight approx. 0,35 kg
 material stainless steel
 degree of protection IP 67

BJA **34-8**

nominal force / nominal load 800 kg
 max. overload range / force limit 150 % of nominal force
 breaking force 400 % of nominal force

electrical execution

measuring signal (output) 1 - 9 mA
 operating voltage 12 - 24 V DC ± 20 %
 current consumption max. 35 mA
 calibration tolerance < 3 % of final value*
 non-linearity < 1 % of final value*
 hysteresis < 1 % of final value*
 temperature coefficient:
 of zero signal $\leq 0,04$ % of final value / K
 of the sensitivity $\leq 0,04$ % of set point / K
 insulation resistance > 5.000 M Ω
 nominal temperature range -15 °C to $+70$ °C
 operating temperature range -25 °C to $+80$ °C**

cable and connection

cable length / cable type:
 sensor - amplifier 0,06 m LiYY 4 x 0,14 mm² (AWG26/7)
 amplifier - cable end 1,5 m LiYY 4 x 0,14 mm² (AWG26/7)
 cable end tinned
 wiring connections
 brown operating voltage U_b
 green ground / earth GND
 yellow measuring signal output I_m
 white calibration signal (low active) CC***
 blue shielding (only in the case of a shielded cable)

* These details are depending on the fit, the resistance moment and the installation length. They are reached with favorable values.

** only for the case that the cable is laid with fastening (depending on cable type)

*** This cable should be connected at the operating voltage unless the calibration signal is used. (only applicable to executions with amplifier)